



PlayStation

NTSC U/C

GRUDGE WARRIORS

PlayStation



SLUS-01150
00000



TAKE2interactive

WARNING: READ BEFORE USING YOUR PLAYSTATION® GAME CONSOLE.

A very small percentage of individuals may experience epileptic seizures when exposed to certain light patterns or flashing lights. Exposure to certain patterns or backgrounds on a television screen or while playing video games, including games played on the PlayStation game console, may induce an epileptic seizure in these individuals. Certain conditions may induce previously undetected epileptic symptoms even in persons who have no history of prior seizures or epilepsy. If you, or anyone in your family, has an epileptic condition, consult your physician prior to playing. If you experience any of the following symptoms while playing a video game – dizziness, altered vision, eye or muscle twitches, loss of awareness, disorientation, any involuntary movement, or convulsions – IMMEDIATELY discontinue use and consult your physician before resuming play.

WARNING TO OWNERS OF PROJECTION TELEVISIONS:

Do not connect your PlayStation game console to a projection TV without first consulting the user manual for your projection TV, unless it is of the LCD type. Otherwise, it may permanently damage your TV screen.

USE OF UNOFFICIAL PRODUCT:

The use of unofficial products and peripherals may damage your PlayStation game console and invalidate your console warranty.

HANDLING YOUR PLAYSTATION DISC:

- This compact disc is intended for use only with the PlayStation game console.
- Do not bend it, crush it or submerge it in liquids
- Do not leave it in direct sunlight or near a radiator or other source of heat.
- Be sure to take an occasional rest break during extended play.
- Keep this compact disc clean. Always hold the disc by the edges and keep it in its protective case when not in use. Clean the disc with a lint-free, soft, dry cloth, wiping in straight lines from center to outer edge. Never use solvents or abrasive cleaners.

Tips and Hints

PlayStation® Hint Line

Hints for all games produced by SCEA are available:

Within the US: 1-900-933-SONY (1-900-933-7669)

\$0.95/min. auto hints, \$1.40/min. live, \$6.95-\$16.95 for tips by mail*,
\$5.00-\$20.00 for card recharge (*Subject to availability)

Within Canada: 1-900-451-5757

\$1.50/min. auto hints

For US callers, game counselors are available 8AM-5PM PST, Monday-Friday. Automated is available 24 hours a day, 7days a week. Live support for Canada not available at this time.

This hint line supports games produced by Sony Computer Entertainment America. No hints will be given on our Consumer Service Line. Callers under 18 years of age, please obtain permission from a parent or guardian before calling. This service requires a touch-tone phone.

Consumer Service/Technical Support Line: 1-800-410-933-9191 ext. 136.

Call this number for help with technical support, installation or general questions regarding the PlayStation game console and its peripherals. Representatives are available Monday-Friday, 7AM-6PM Pacific Standard Time.

PlayStation On-line — www.playstation.com

Our news is always hot! Visit our website and find out what's happening – new titles, new products and the latest information about the PlayStation game console.

Table of **CONTENTS**

Introduction	1
The Game	2
Power Exchange Units	2
The Secret Prototype Droid	3
Power Generators	3
Tokens	4
The Dropship	4
Controls	5
Screen Layout	6
Playing the Game	7
Power-Ups	9
Options	10
The Gangs	11
Credits	18

Introduction

It began in the pre-dawn darkness of a suburban crossroads in downtown Tokyo: Two men burnt alive as they climbed from their collided vehicles. And within hours, two more were killed in separate but similar incidents on Chicago and Hong-Kong streets. In all, 10 have died in just one night. Chicago authorities say the burst of violence is just one sign that gang warfare of classic proportions has broken out again, the result being a brutal struggle between gang members as the lower ranks try to prove their abilities to their respected leaders. Over 50 deaths during the last month are linked to this new wave of gang warfare - highly customized armored vehicles are being used in pitched battles between rival gangs around the world. The gangs use protection money to buy the technology to design and build their deadly wheeled weapons.

Rumors have surfaced that some of the world's most powerful gangs have started planning attacks on an international scale. Rival gangs from different countries are now at war with each other. In recent years these gangs have moved away from the mainland in favor of small island fortresses away from major cities in order to protect themselves from attack. Totally self-sufficient with their own power generators, these island headquarters give them increased protection and enable them to operate far more discreetly.

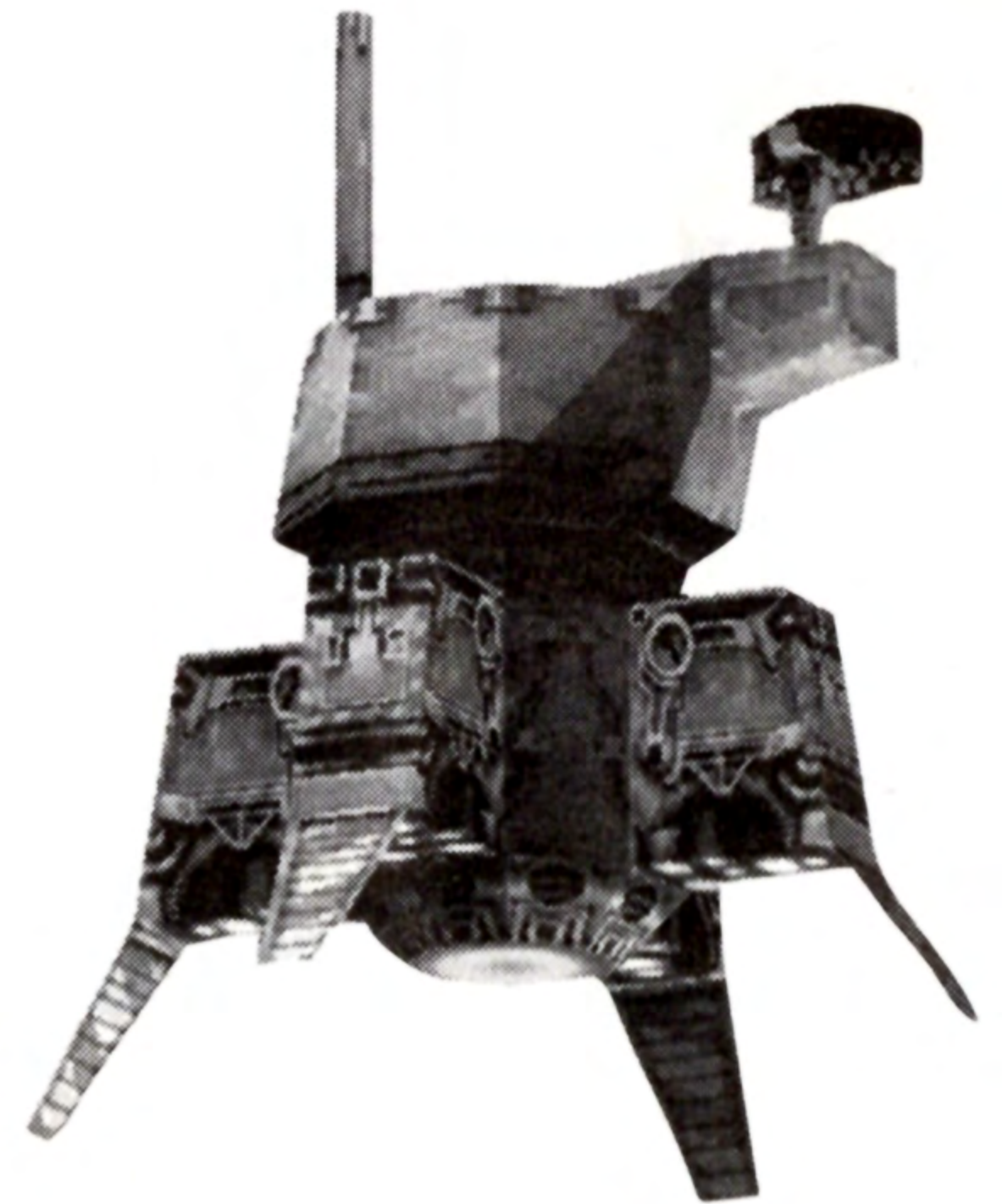
Overseeing the top eleven gangs is the Crimelord, an independent entity who provides funding and guidance as well as acting as a communication channel between the gangs. He has commissioned each of the gangs to develop a secret weapon for him at their headquarters. The weapons will eventually provide him with enough force to take total control of each gang. It's up to you to defeat him and take your gang to the top!

The Game

Grudge Warriors allows you to join one of the world's most powerful gangs and prove yourself to them. This will involve a series of one-man attacks against rival gangs using a specially built armored vehicle. You will be dropped on to each of the gang's islands, your mission being to destroy as much of its defense network as possible. All the islands will be equipped with standard power exchange units which will top up your power cells when they become depleted. Your main goal is to destroy the island's power generators in order to neutralize it.

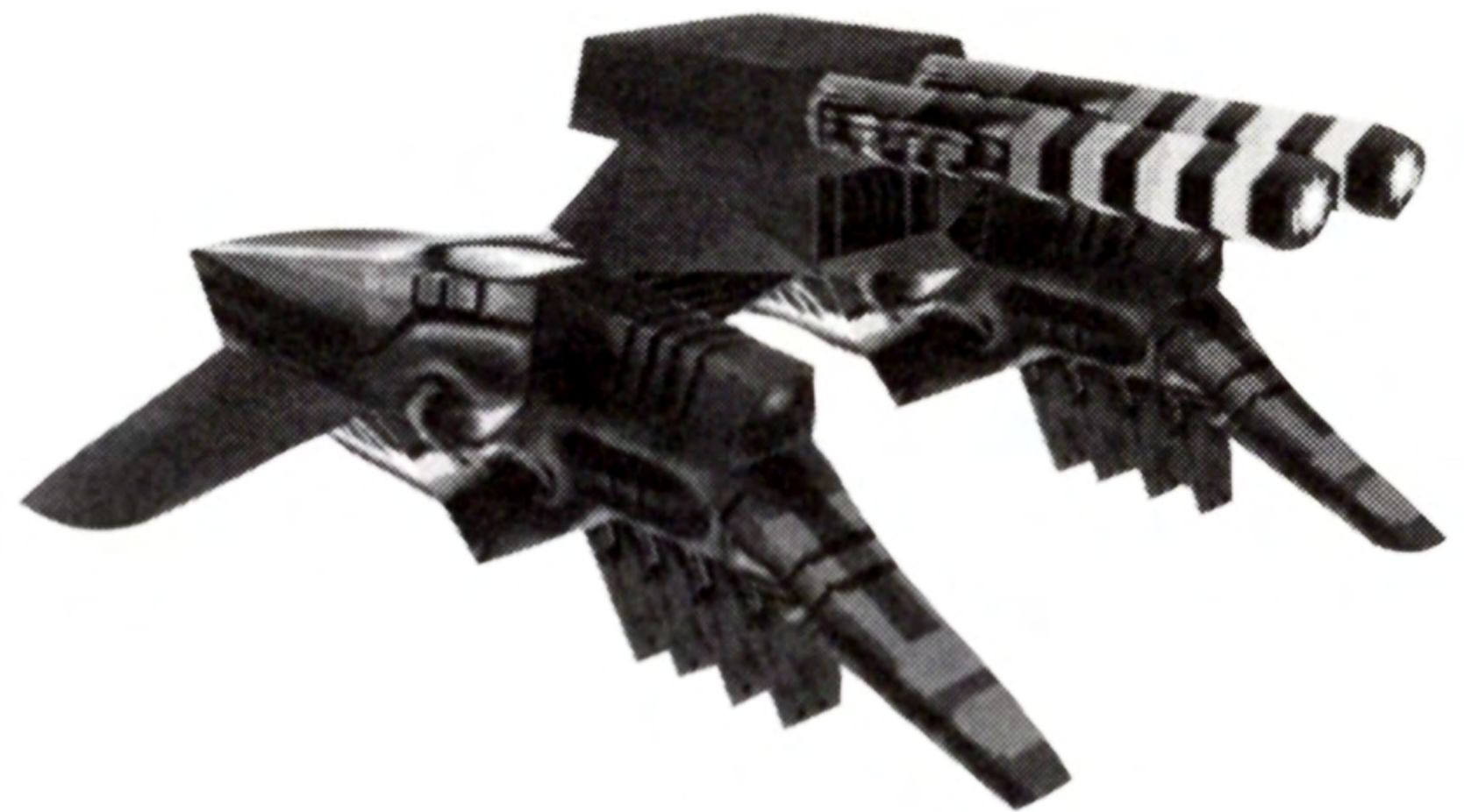
Power Exchange Units

The vehicles run on a form of electricity and are recharged with standard power exchange units. Your vehicle can be recharged at any of these points on all of the islands. The power exchange units cannot deliver a continuous supply of power, however, and after recharging a vehicle they need a few minutes to regenerate the lost power before they can recharge another. These units are susceptible to damage but have a self-repair mechanism so watch where you're shooting. They will recharge your power and refresh your shield but will not give you extra health. Power exchange units also reload your weapons.



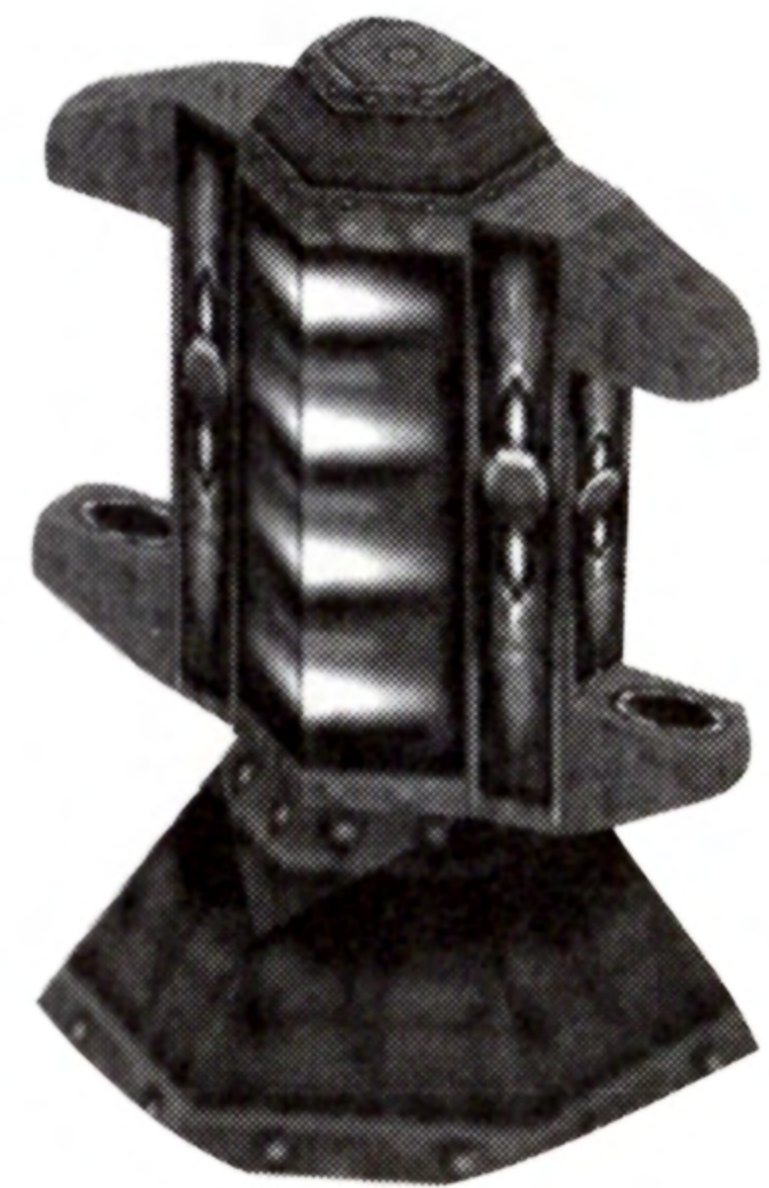
The Secret Prototype Droid

Hidden away on each island is one of the secret droid weapons that is being developed for the Crimelord by each gang. You must find it and try to destroy it. This will not be an easy task though and you may have to abandon your attempts until your confrontation with the Crimelord.



Power Generators

Each island has a network of power generators which keep the defense systems powered. You must target and destroy all of these in order to neutralize the island. Each gang will utilize a different source of power so the power generators will look different on each island. You will be shown what they look like before you attack the island, however.



Tokens

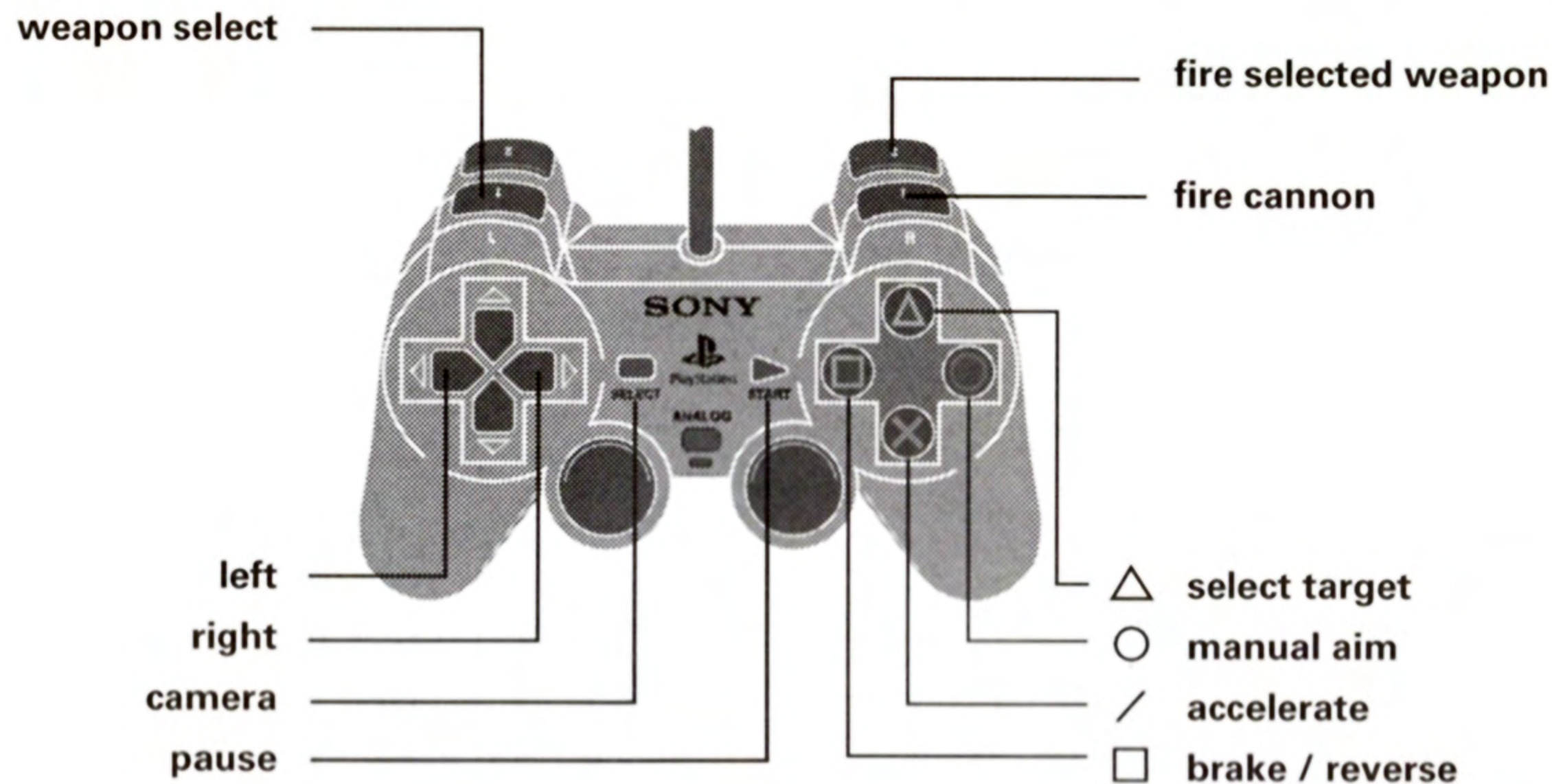
20 tokens will be scattered around each of the islands. Collect them to earn upgrades that will improve your chances of defeating the gangs. Every time you collect 50 tokens you will be awarded an extra weapon or a vehicle power-up.



The Dropship

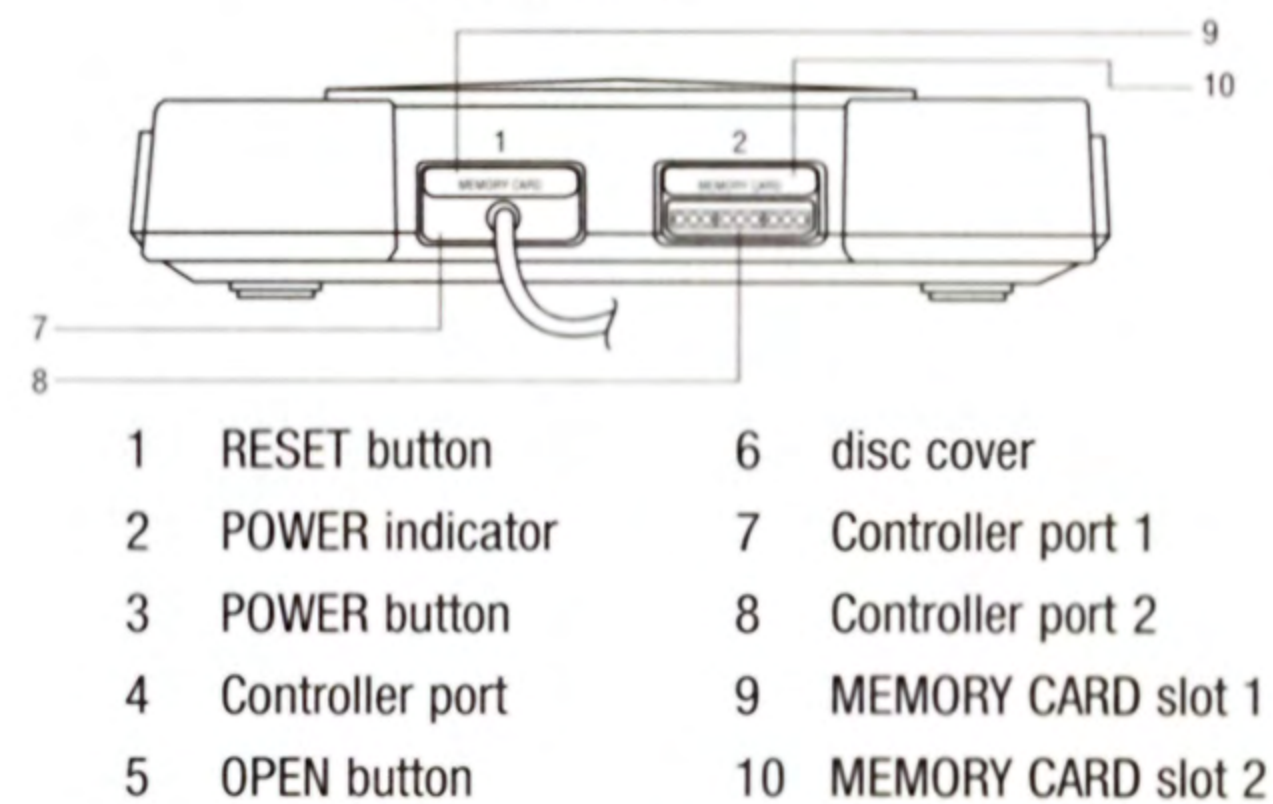
You will be taken to the island by an armored dropship which will also collect you when all power generators have been destroyed. Return to the drop off point to be collected by the dropship.

Controls

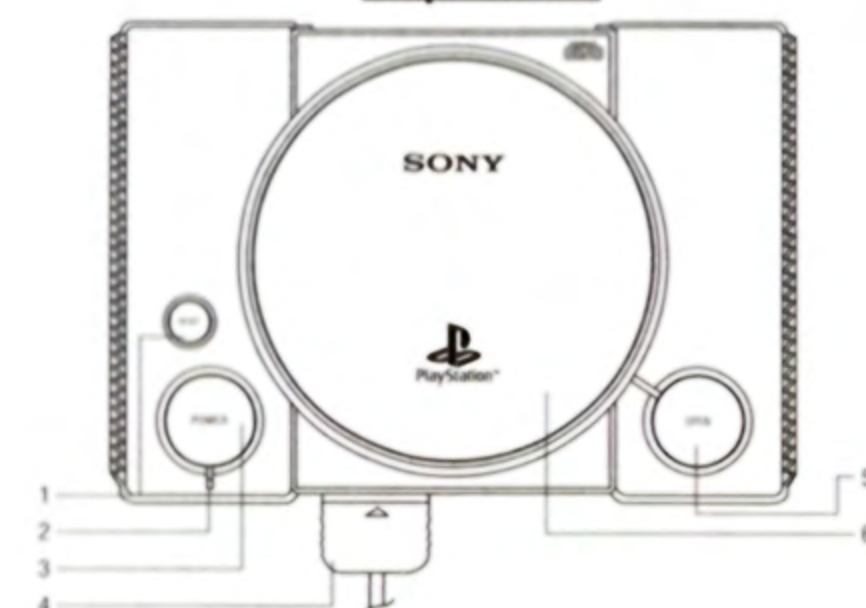


- Cross- Accelerate
- Square- Brake/Reverse
- Circle plus D-Pad- Manually moves turret
- Triangle- Switch's targeted enemy
- L1- Next weapon
- L2- Previous weapon
- R1- Fire's cannon
- R2- Fire's selected weapon
- Select- Changes camera angle
- Start- Pause
- Left Analog Stick- Controls direction of vehicle and the turret
- Directional Buttons- Turn vehicle left or right (when in digital mode)
- Right Analog Stick- Not Applicable

Front view

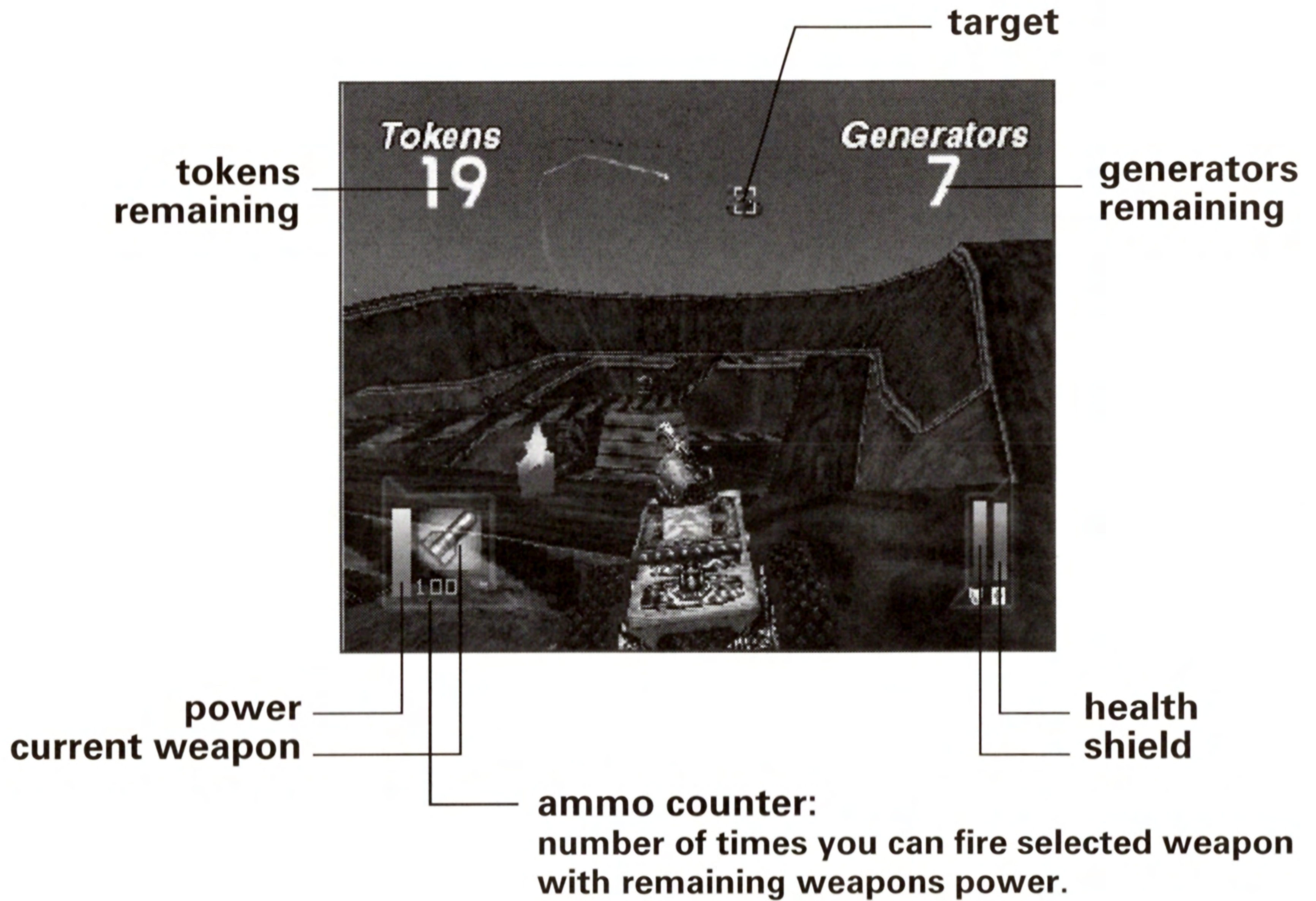


Top view



To use the manual aim, hold down the manual aim button while moving the turret with the left, right, up and down buttons.

Screen Layout



Playing the Game

Auto-aim

The turret automatically locks-on to any potential target to enable you to drive and shoot at the same time. This can be overridden by holding the manual aim button while pressing up, down, left or right to move the turret, then either of the fire buttons to release a weapon. The auto-aiming can be made to select an alternative target when several targets are on screen by pressing the select target button.

Camera

You can select from one of three different camera positions which are near, medium and far. These can be selected by pressing the camera button.

Weapons

Each tank is equipped with four weapons with space for a fifth add-on special weapon. Collecting enough tokens will enable you to gain the special weapon. The weapons use a lot of energy so you must keep filling up your power cells at the power exchange units.

Each tank is equipped with four standard weapons. In a one-player game, a bonus weapon unique to each gang can be acquired by picking up enough tokens. The different weapons, drawing from one power source, use different amounts of power, and correspondingly

cause different amounts of damage. The weapons power meter indicates how much overall weapons power is available, spread out amongst all available weapons. Each individual weapon has a different amount of ammunition when at full power. For example, at full power a tank will have enough weapons energy to fire 40 guided missiles or 81 heavy bombs or 409 pulse cannon blasts, or some combination of the three. Be sure to manage your weapons. The weapons are as follows:

Unlimited fire cannon - this weapon is not connected to the weapons power meter, so no tank will ever be left totally defenseless. This is not recommended for battle against a target that can fire back, as it does little damage.

Pulse cannon - Slow speed wave of energy. Can knock out weaker foes.

Heavy bomb - Shorter range than the guided missiles. Good for saturation bombing -- lob 10 or 20 over a wall and knock out some enemies without them having you in their sights.

Guided missile - Your main hand-to-hand combat battle weapon. Some are heat-seeking, some are motion-detecting, depending on the tank.

Special weapon - Your nemesis will meet his maker.

When your weapons power bar runs out while using a more potent weapon, be sure to scroll through your other means of pain delivery, as you may have enough juice for an extra bomb or two.

Power-Ups

Power-ups are located on each of the islands to help you defeat the enemy gang. These are stored as a sixth weapon and can be triggered by selecting the power-up as you would select a weapon, then pressing fire. The power-ups are as follows:



Invisibility for a limited period



Invulnerability for a limited period






Extra speed for a limited period



Air filtration unit - filters out toxic gases for a limited period

Options

After selecting Options from the main menu, use the up and down buttons to select the option, then left and right on the controller to change the option. The exceptions to this are the 'Screen Adjust' and 'Controller Config' options. To adjust the position of the screen select 'Screen Adjust' then hold down the  button while pressing up, down, left or right to adjust the screen position as desired. To configure the controller select 'Controller Config' then use up and down to select the button to configure then right and left to change the function. While in the 'Controller Config' mode press the  button to reset the buttons to the default setting and press the  button to accept the changes. The following settings can be changed from the options screen:

Effects Volume - Changes the volume of the sound effects throughout the game

Music Volume - Changes the volume of the music throughout the game

Invert Reverse - Inverts the steering controls when reversing

Vibration - Turns the controller vibration on or off

Screen Adjust - Press the  button then left/right/up/down to move the screen

Controller Config - Changes the controller button functions

Saving / Loading

The opportunity to save comes after completing each level in a one-player game. Up to four games can be saved on one memory card. The total of the saves takes up one memory block. To load a saved game select "Load Game" on the Main menu screen.

The Gangs



Gang Name: Chrome Dimension

Speciality: Electricity

Special Weapon: Arc Gun

Background:

Formed from a failed workers union of electricians. They are all expert sparkies and have little fear of death. Their vehicle is electrically powered (naturally!) with a hard titanium shell - heavy but powerful.

Gang Name: Freestyle A's

Speciality: Speed

Special Weapon: Infinity Ray

Background:

This highly respected gang originates from the USA. Very quick and agile with unprecedented skill in battle techniques and strategy, they model themselves after death-defying dragster racers.





Gang Name: Slick Runners
Speciality: Grease and Grime
Special Weapon: Bitumen Bomb
Background:
Most of the members of this gang are former oil rig workers. They work very well together as a team and excel best as drivers when the surface becomes slippery. Their weapons are high-powered and their vehicles very strong.

Gang Name: Death Corps
Speciality: Heavy Weaponry
Special Weapon: Multi-Head Bomb
Background:
Mostly court-marshalled soldiers comprise this gang. They are hardened soldiers from the Army, Navy and Air Force, making them a difficult opponent.





Gang Name: H₂SO₄
Speciality: Acid
Special Weapon: Sulphur Burst

Background:
Built from many small neo-Nazi punk groups, this gang has a chemical scientist for a leader, Dr. Tor Jakugi. He has developed one of the most deadly fighting vehicles ever known.

Gang Name: Pike Squad
Speciality: Construction
Special Weapon: Tornado

Background:
This gang from Germany model themselves on construction workers and their vehicles represent the heavy, powerful vehicles used in construction. Their armor plating will take a lot of heavy pounding to wear down, but their weapons are not as strong as some other gangs.





Gang Name: Pyromaniacs

Speciality: Fire

Special Weapon: Inferno

Background:

This group of arsonists has a special relationship with fire.

Gang Name: Robotek

Speciality: Cybernetics

Special Weapon: Remote Ion Cannon

Background:

Composed entirely of androids and semi-androids, this gang has the most sophisticated weapons.





Gang Name: Sundogs
Speciality: Dry Dusty Terrain
Special Weapon: Iron Storm

Background:
These nomadic monks from the deserts of the Middle East have a natural ability in dry, dusty environments. Their vehicles are designed to work best on sand and their weapons take advantage of the sandy environment.

Gang Name: Norse Force 5
Speciality: Ice
Special Weapon: Ragnorak

Background:
Based on Viking warriors, this gang has firm roots in Scandinavia and their vehicle and weapons reflect this. They are excellent drivers on ice and have a barbaric nature.





Gang Name: Disciples of Pog

Speciality: Crazy Antics

Special Weapon: Flower Bomb

Background:

A prerequisite of joining the 'Disciples of Pog' is to have served at least five years in an establishment for the criminally insane. Their only real skill is that they are utterly mad and have no fear of death whatsoever.

Credits

Developed by Tempest Software Ltd

Programming:

Bill Pullan
Alan Latham
Dave Morris
Pete 'Jibber' Featherstone

Artwork:

Andrew Crawshaw
Russ Daff
Karl Riley
Geoff Wilson

Producers:

Gary Bracey
Steve Whittle
Barry Simpson
Darren Anderson
Ken Jordan
Kev Hobson
Denby Grace
Wil Kirton
Matt Hewitt
Andy Mason
Mark Lloyd
Charlie Kinloch
Paul Byers
Jim Thompson
Lee Johnson
Tim Bates
Rob Dunkin
Jim Cree
Julian Turner
Kit Brown
Jim Collins

Credits

TAKE TWO INTERACTIVE

EXECUTIVE PRODUCER	Sam Houser
TECHNICAL PRODUCER	Gary J Foreman
US PRODUCER	Jamie King
EUROPEAN PRODUCER	Ken Jordan
PRODUCTION TEAM	Neil McCaffrey
	Matt Gorman
	Jennifer Kolbe
	Kevin Gill
	Lauren Faccidomo
	Terry Donovan
	Stanton Sarjeant

Quality Assurance

US QA Team	
QA Manager	Jeff Rosa
QA Team	Mark Garone
	Joe Greene
	Richard Huie
	Bobby McCarthy
	Jeremy Pope
European Team	
Translations Manager	Frazer Nash
Assistant Producer	Greg Matthews
QA Team	Chris Lacy
	Lee Brown
	Nick Sneddon
	Gary Sims
	Charlie Johnstone
	Daley Salami

Notes

LIMITED WARRANTY

Sony Computer Entertainment America (SCEA) warrants to the original purchaser of this SCEA product that this software is free from defects in material and workmanship of a period of ninety (90) days from the original date of purchase. SCEA agrees for a period of ninety (90) days either repair or replace, at its option, the SCEA product. You must call 1-800-345-SONY to receive instructions to obtain repair/replacement services.

This warranty shall not be applicable and shall be void if the defect in the SCEA product has arisen through abuse, unreasonable use, mistreatment or neglect. THIS WARRANTY IS IN LIEU OF ALL OTHER WARRANTIES AND NO OTHER REPRESENTATIONS OR CLAIMS OF ANY NATURE SHALL BE BINDING ON OR OBLIGATE SCEA. ANY IMPLIED WARRANTIES APPLICABLE TO THIS SOFTWARE PRODUCT, INCLUDING WARRANTIES OF MERCHANTABILITY AND FITNESS FOR A PARTICULAR PURPOSE, ARE LIMITED TO THE NINETY (90) DAY PERIOD DESCRIBED ABOVE. IN NO EVENT WILL SCEA BE LIABLE FOR INCIDENTAL OR CONSEQUENTIAL DAMAGES RESULTING FROM POSSESSION, USE OR MALFUNCTION OF THE SCEA SOFTWARE PRODUCT.

Some states do not allow limitations as to how long an implied warranty lasts and/or exclusions or limitations of consequential damages, so the above limitations and/or exclusions of liability may not apply to you. This warranty gives you specific legal rights, and you may also have other rights which vary from state to state.

ALSO AVAILABLE FROM TAKE 2 INTERACTIVE



**THE ENEMY EXPECTS YOU
WITHIN 24 HOURS. ACTUALLY,
YOU'RE ALREADY THERE.**

- **CHOOSE STEALTH OR ALL-OUT FRONTAL ASSAULT AS YOU LEAD YOUR TEAM OF RANGERS INTO COMBAT AGAINST ULTRA-POWERFUL TERRORIST UNITS.**
- **FIGHT AGAINST TIME AND HUGE ENEMY FORCES IN KNOWN GLOBAL TERRORIST HOTSPOTS.**
- **AN ARSENAL TO CHOOSE FROM INCLUDING SHOTGUNS, GRENADES, MACHINE GUNS, SNIPER RIFLES, TRIPWIRE MINES, NIGHTVISION GOGGLES AND MORE.**
- **TAKE ON YOUR ENEMIES AND SHARE THE BATTLE SCARS IN CO-OPERATIVE TWO PLAYER SPLIT-SCREEN MODE.**

©2000 Take 2 Interactive Software, Inc. All rights reserved. Take-Two Games 575 Broadway New York, N.Y. 10012
Licensed by Sony Computer Entertainment America for use with the PlayStation game console. PlayStation and the PlayStation logos are registered trademarks of Sony Computer Entertainment Inc. The ratings icon is a trademark of the Interactive Digital Software Association. Manufactured and printed in the U.S.A. THIS SOFTWARE IS COMPATIBLE WITH PLAYSTATION GAME CONSOLES WITH THE NTSC U/C DESIGNATION. U.S. AND FOREIGN PATENTS PENDING.

